

# We build software that helps you accelerate and evolve

Architect your vision.  
We'll do the rest

Our team is focused primarily on enterprise software development with a significant background in providing solutions for business demands since 2011.

We can help you with your tasks starting from lean development of your future network architecture to full-cycle web- and mobile development, as well as production grade deployment setup, audit or penetration testing.

# Reverse Systems is a software development company with delivery center in Yekaterinburg, Russia

# Our engineers are glad to be of service at any stage of the product

● QA Engineer  
**Vsevolod Parvadov**

From R&D and building MVP from scratch,  
to scaling, UX analyzing and improving

[sales@reverse.systems](mailto:sales@reverse.systems)

<http://reverse.systems>



Our expertise

# Optimize. Advance. Evololve.

For business leaders looking to create better user experiences or improve operations through custom software

ENTERPRISE SOFTWARE  
DEVELOPMENT

DEDICATED  
DEVELOPMENT TEAM

UI/UX AND MVP FROM  
SCRATCH

HYBRID MOBILE  
DEVELOPMENT

QUALITY ASSURANCE  
AND TESTING

PENETRATION TESTING

TECHNICAL CONSULTING,  
SUPPORT AND IT AUDIT

# **We know how to build software that helps you accelerate and evolve. From startups to the leading**

Even though enterprises have similar challenges and opportunities, they all define and arrive at value differently. Our approach focuses on where you are today and where you want to go. From there, we chart a path to success — one based on your vision and our experience in getting enterprises there.

### How quickly we can scale your team

Up to one week if we have a requested talent available internally and up to 2 months if we have to recruit engineers from outside the company.



# Get your agile and fully competent dedicated development team\*

# UI/UX and MVP from scratch

We are here to collaborate with you to create modern interfaces that align with your brand, follow current leading e-commerce practices, and adhere to web accessibility and ADA compliance requirements. And MVP-related practices help us to deliver the very essence of your product in its most basic form.

[sales@reverse.systems](mailto:sales@reverse.systems)

<https://reverse.systems>





Some years back, the cross-platform app development was constrained to make simple mobile apps and games. Over time, emerging technologies have made cross-platform development more adaptable, powerful, and flexible than before.

We make hybrid apps that will impress your audience, all while complementing your marketing strategy. Our hybrid apps are built in a way that makes them almost indistinguishable from native ones, as they work perfectly on all major platforms, including iOS, Windows Mobile and Android.

# Hybrid Mobile app development - a profitable venture for the people



# We guarantee product consistency and seamless operation



Our team has solid experience in requirements analysis, test planning, test case development, environment setup, test execution, and test cycle closure.

By taking on the complete software testing life cycle, we guarantee product consistency and seamless operation across multiple platforms, browsers, devices, and carrier networks.

# OWASP Top 10, ISO/IEC 27001:2005 **etc**

With threats constantly evolving, it's recommended that every organisation commissions penetration testing at least once a year, but more frequently if growing.

We are ready to offer competent staff with great experience related to web-security and penetration testing. Even in case the task seems to be impracticable, we know who to bother for advice to do with a favor.

We are focused on technologies we are good at and improving our knowledge constantly

CI/CD

NodeJS

Angular

TypeScript/JS

RxJS

NestJS

Ionic

Capacitor

React

VueJS

PHP

Laravel

API Integrations

REST/SOAP

PostgreSQL

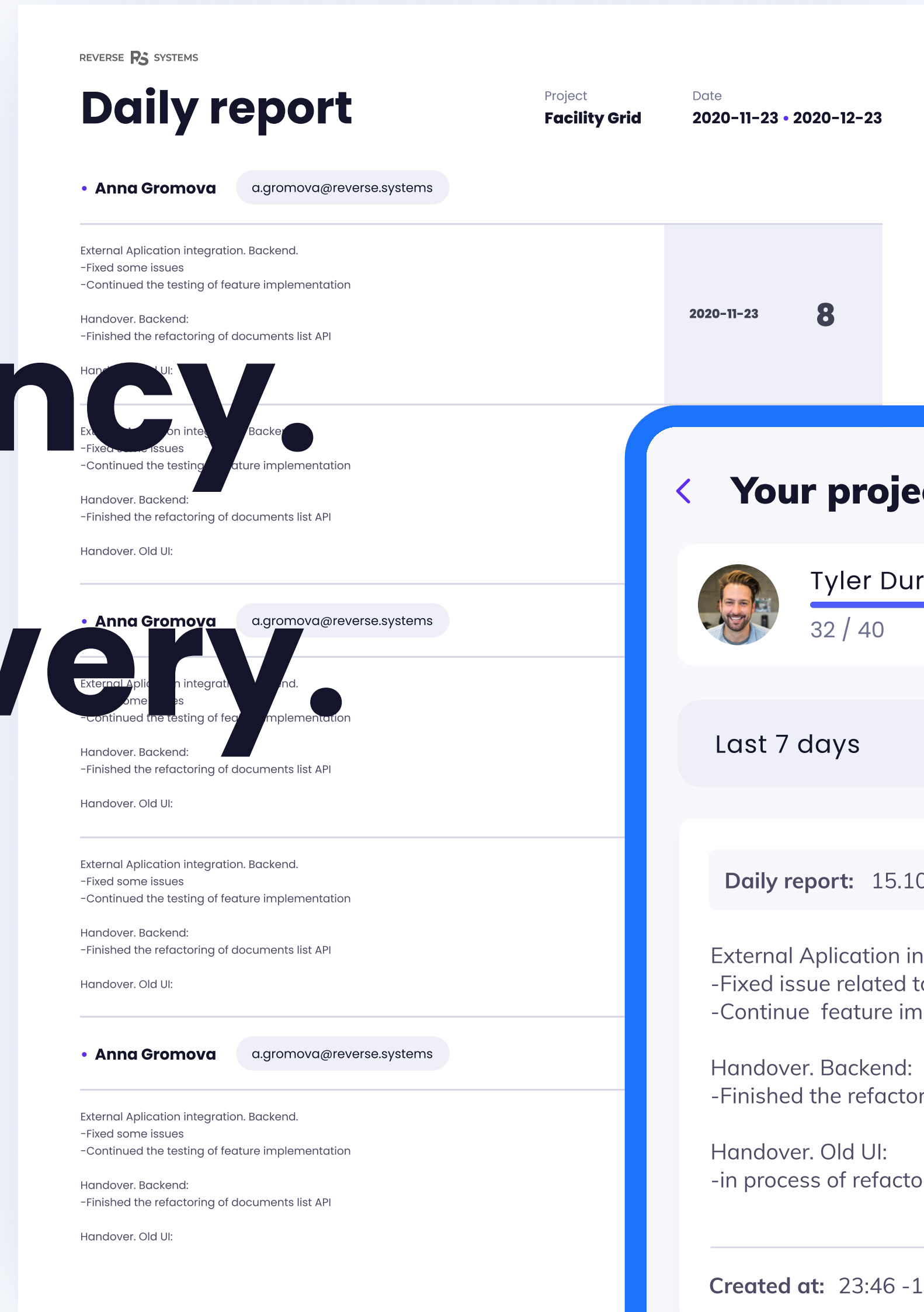
MongoDB

Redis

Elastic Stack

# Agile. Transparency. Continuous Delivery.

According to the continuous paradigm, quality products are released frequently and predictably to customers. We are ready provide all the necessary tools you need to control each stage of development process.





**And many,  
many more.  
Let's get in  
touch!**

Our work

# Commissioning & Operational Readiness Software

**in Construction Management**



# Complexity:

# Timeline: 2015 – present days

CI/CD   Node.js   Angular   REST   Ionic/Cordova   Selenium

SQL/NoSQL Databases

## Custom Development Team with the following responsibilities:

- Business Analytics and Project Management
- UI/UX and Prototyping
- System Architecture, Feature Planning, Tech Writing
- API Integrations with Construction Management Software
- Continuous Integration/Continuous Delivery
- DevOps (Server Setup and Maintaining)
- Quality Assurance
- Penetration Testing

| ID        | Name         | Type | Location | Status     | Progress               | Actions  |
|-----------|--------------|------|----------|------------|------------------------|----------|
| PFC-M-563 | TEST_COPY_06 | HVAC | L1       | Damper     | Factory Testing        | 0 of 0   |
| PFC-M-565 | TEST_COPY_06 | HVAC |          | Custom AHU | Factory Testing        | 0 of 0   |
| PFC-M-566 | TEST_COPY_07 | HVAC |          | AHU        | Pre-Functional Testing | 80 of 80 |
| PFC-M-567 | TEST_COPY_07 | HVAC | L1       | Damper     | Factory Testing        | 0 of 0   |
| PFC-M-568 | TEST_COPY_07 | HVAC |          | Custom AHU | Factory Testing        | 0 of 0   |
| PFC-M-569 | TEST_COPY_AG | HVAC |          | AHU        | Pre-Functional Testing | 80 of 80 |
| PFC-M-570 | TEST_COPY_AG | HVAC | L1       | Damper     | Factory Testing        | 0 of 0   |
| PFC-M-571 | TEST_COPY_AG | HVAC |          | Custom AHU | Factory Testing        | 0 of 0   |
| PFC-M-572 | TEST_COPY_AG | HVAC |          | AHU        | Pre-Functional Testing | 80 of 80 |

**Student Center - OVERVIEW**

**Checklists**

Total Checklists: 625

- Generated: 51
- Incomplete: 137
- Checked: 6
- Approved: 431

Checklist Question Progress (Weeks/Months): Oct, Nov, Dec, Jan, Feb, Mar

Checklist Status: Generated, Incomplete, Checked, Approved

Checklist % Complete by Responsibility:

| Responsibility          | Not Answered | Answered Yes | Answered No or N/A |
|-------------------------|--------------|--------------|--------------------|
| Architect               | 0            | 100          | 0                  |
| Electrical Contractor   | 41           | 57           | 0                  |
| Mechanical Contractor   | 41           | 57           | 0                  |
| Controls Contractor     | 42           | 56           | 0                  |
| Fire Contractor         | 50           | 50           | 0                  |
| TAB Contractor          | 55           | 45           | 0                  |
| Commissioning Authority | 67           | 33           | 0                  |

Checklists with Most Open Issues:

- PFC-M-3 (AHU-03)
- PFC-M-5 (HWP-02)
- PFC-M-590 (B-A1-COPY-01)
- PFC-M-211 (B-01 & B-02)
- PFC-M-197 (AHU-01)

**Functional Tests**

Total Functional Tests: 116

- Not started: 116
- Generated: 11
- Deficient: 4

Functional Test Question Progress (Weeks/Months): Oct, Nov, Dec, Jan, Feb, Mar

Functional Test Status: Not started, Generated, Deficient, Pre-tested, Completed, Seasonal/Deferred

**HANDOVER**

All Disciplines

| System                          | Locations             | Total Open Issues | Critical | Receipt of Equipment | Equipment Start-Up | Pressure Testing | Building Envelope Mockup | Pre Functional CHK - HVAC | Pre Functional CHK - ELEC | Functional Perfo |
|---------------------------------|-----------------------|-------------------|----------|----------------------|--------------------|------------------|--------------------------|---------------------------|---------------------------|------------------|
| sys: Atrium Makeup Air Suppl... |                       | 1                 |          |                      |                    | 1                | 1                        |                           |                           |                  |
| eqp: AHU-04                     | Floor: rm 404 Mech... |                   | 1        | 1                    | 1                  |                  |                          | 2                         |                           | 2                |
| CHW                             |                       | 8                 | 1        |                      |                    |                  |                          |                           |                           |                  |
| eqp: AHU-01                     | Floor: Basement Me... | 2                 |          | 1                    | 1                  | 1                |                          | 3                         | 1                         | 2                |

# Web-application:

Node.js

Angular 12

Typescript

RxJs

NestJs

PostgreSQL

MongoDB

Redis

Elasticsearch

- Continuous Integration/Delivery
- Cloud-based software (SaaS)
- Variety of API integrations
- Reporting and PDF-editing services
- Distributed and optimized load
- High level of Unit Tests coverage
- Security and Testing standards compliance

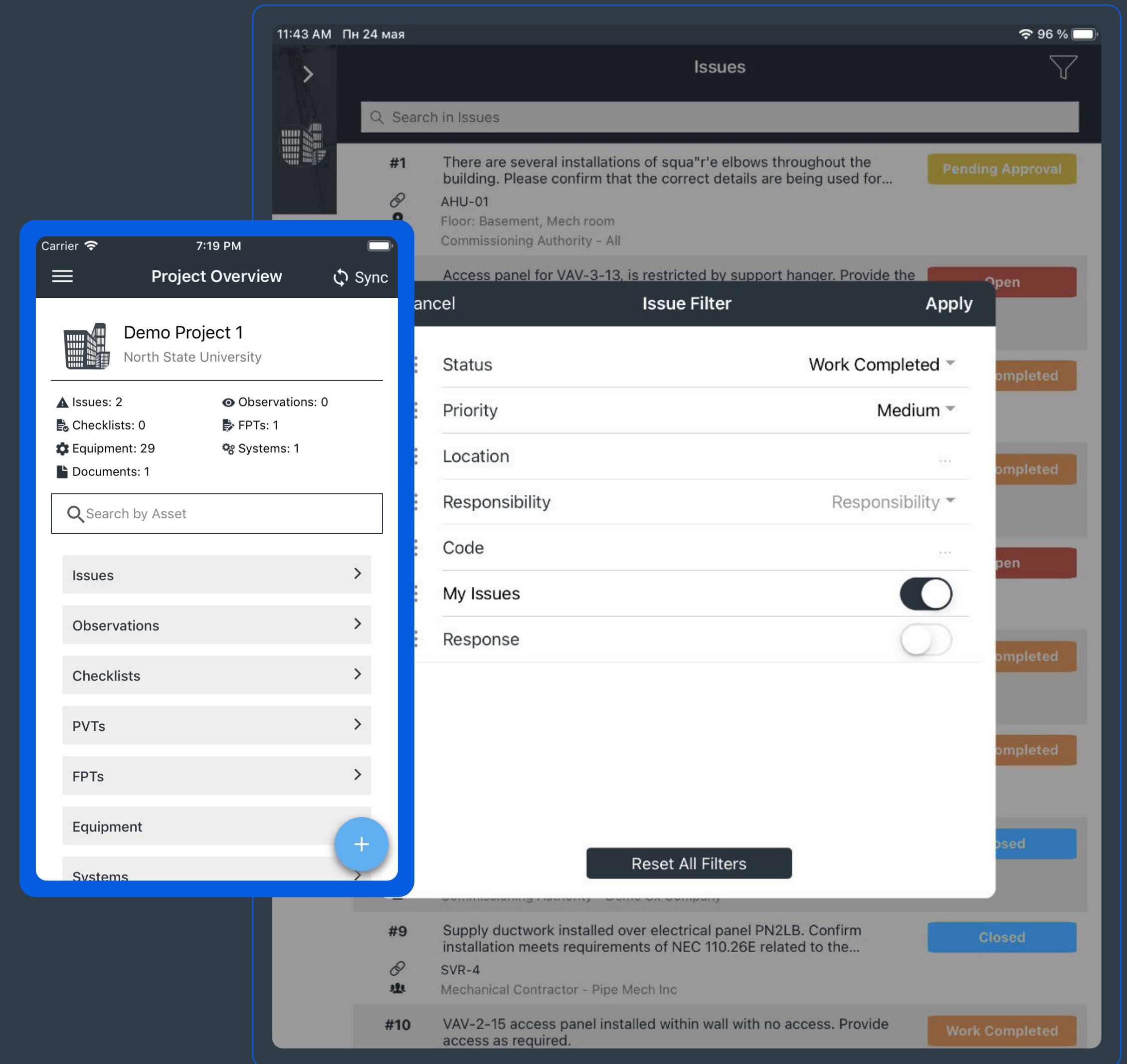
The screenshot shows a web application interface for 'HANDOVER' with a table titled 'All Disciplines'. The table has columns for 'System', 'Locations', 'Total Open Issues', 'Critical', and several commissioning stages: 'Receipt of Equipment', 'Equipment Start-Up', 'Pressure Testing', 'Building Envelope Mockup', 'Pre Functional CHK - HVAC', 'Pre Functional CHK - ELEC', and 'Functional Performance'. Each stage has sub-columns for 'Status' and 'Open Issues'. The table lists various equipment items like 'sys: Atrium Makeup Air Suppl...', 'eqp: AHU-04', 'CHW', 'eqp: AHU-01', 'eqp: AHU-02', 'eqp: AHU-04', 'eqp: AHU-03', 'eqp: CH-A1', 'eqp: CH-B1', 'eqp: CHWP-A1', 'eqp: CHWP-A2', 'eqp: CHWP-B2', 'eqp: CT-A1', 'eqp: CT-B1', and 'eqp: CWP-A1'. The 'Status' cells contain green or red numbers, and the 'Open Issues' cells contain small icons representing the number of open issues.

| System                          | Locations             | Total Open Issues | Critical | Receipt of Equipment |             | Equipment Start-Up |             | Pressure Testing |             | Building Envelope Mockup |             | Pre Functional CHK - HVAC |             | Pre Functional CHK - ELEC |             | Functional Performance |             |
|---------------------------------|-----------------------|-------------------|----------|----------------------|-------------|--------------------|-------------|------------------|-------------|--------------------------|-------------|---------------------------|-------------|---------------------------|-------------|------------------------|-------------|
|                                 |                       |                   |          | Status               | Open Issues | Status             | Open Issues | Status           | Open Issues | Status                   | Open Issues | Status                    | Open Issues | Status                    | Open Issues | Status                 | Open Issues |
| sys: Atrium Makeup Air Suppl... |                       | 1                 |          |                      |             |                    |             | 1                | 1           |                          |             |                           |             |                           |             |                        |             |
| eqp: AHU-04                     | Floor: rm 404 Mech... |                   | 1        | 1                    | 1           | 1                  |             |                  |             |                          |             | 2                         |             |                           |             |                        | 2           |
| ▼ CHW                           |                       | 8                 | 1        |                      |             |                    |             |                  |             |                          |             |                           |             |                           |             |                        |             |
| eqp: AHU-01                     | Floor: Basement Me... | 2                 |          | 1                    | 1           | 1                  | 1           |                  |             |                          |             | 3                         | 1           |                           |             |                        | 2           |
| eqp: AHU-02                     | Roof                  | 2                 |          | 1                    | 1           | 1                  | 1           |                  |             |                          |             | 3                         |             |                           |             |                        | 3           |
| eqp: AHU-04                     | Floor: rm 404 Mech... |                   | 1        | 1                    | 1           | 1                  |             |                  |             |                          |             | 2                         |             |                           |             |                        | 2           |
| eqp: AHU-03                     | Roof                  | 4                 |          | 1                    | 1           | 1                  | 1           |                  |             |                          |             | 3                         |             | 2                         |             |                        | 3           |
| eqp: CH-A1                      | MECH YARD             |                   |          | 1                    | 1           | 1                  | 1           |                  |             |                          |             |                           |             |                           |             |                        |             |
| eqp: CH-B1                      | MECH YARD             |                   |          | 1                    | 1           | 1                  | 1           |                  |             |                          |             |                           |             |                           |             |                        |             |
| eqp: CHWP-A1                    | MECH ROOM             |                   |          | 1                    | 1           | 1                  | 1           |                  |             |                          |             | 1                         |             |                           |             |                        | 1           |
| eqp: CHWP-A2                    | MECH ROOM             |                   |          | 1                    | 1           | 1                  | 1           |                  |             |                          |             | 1                         |             |                           |             |                        | 1           |
| eqp: CHWP-B2                    | MECH ROOM             |                   |          | 1                    | 1           | 1                  | 1           |                  |             |                          |             | 1                         |             |                           |             |                        | 1           |
| eqp: CT-A1                      |                       |                   |          | 1                    | 1           | 1                  | 1           |                  |             |                          |             |                           |             |                           |             |                        |             |
| eqp: CT-B1                      |                       |                   |          | 1                    | 1           | 1                  | 1           |                  |             |                          |             |                           |             |                           |             |                        |             |
| eqp: CWP-A1                     | MECH YARD             |                   |          | 1                    | 1           | 1                  | 1           |                  |             |                          |             | 1                         |             |                           |             |                        | 1           |

# Hybrid mobile application:

Ionic Capacitor Typescript TypeORM SQLite

- Shared codebase for Android, iOS and UWP
- Web UI elements conforming to the native look & feel
- Abstracted Single-codebase native access through plugins (with ability to write custom plugins (camera, notifications, external apps))
- Integrated SQLite database - simple and fast enough
- Suitable for offline use whenever you need. Just sync it



# Marketplace of Electric Power Distribution Equipment

EPDE Marketplace is the instrument to minimize marketing efforts and maximize productivity of many small vendors and service providers in the construction and electricity distribution field.

Complexity:

Timeline: 2019 – 2020

- CI/CD
- Node.js
- Angular
- Typescript/JS
- RxJS
- NestJS
- API Integrations
- REST
- PostgreSQL

Custom Development Team with the following responsibilities:

- Business Analytics and Project Management
- UI/UX and Prototyping
- System Architecture and Feature Planning,
- Quality Assurance

sales@reverse.systems

https://reverse.systems

|                          |         |  |                                   |       |    |            |            |  |
|--------------------------|---------|--|-----------------------------------|-------|----|------------|------------|--|
| <input type="checkbox"/> | 0653348 |  | Substation KTP-TW 63-250/10(6)0,4 | Asale | 0  | 2 000 000P | 20.08.2020 |  |
| <input type="checkbox"/> | 0653348 |  | Substation KTP-TW 63-250/10(6)0,4 | Asale | 24 | 2 000 000P | 20.08.2020 |  |
| <input type="checkbox"/> | 0653348 |  | Substation KTP-TW 63-250/10(6)0,4 | Asale | 24 | 2 000 000P | 20.08.2020 |  |

Rows per page: 5 1-5 of 13

Equipments

Category: Equipments, Transformer, Components

Country: Russia, China, USA, Germany, +More

Manufacturers: UTZ, ZSTO, Energy

Price: Low to High | Payment type: | \$

**KTP-TW 63-250/10(6)0,4**

Country: Russia | Type: booth | Transformer: 1 | Power: 630 kBA

Rated voltage on the high voltage side: 10 kW | Rated voltage on the low voltage side: 0,4 kW

7-500P **6 000\$** (-20%)

Seller: **Urals Transformers Factory**

Add to Cart | Bye Now

19 Customer reviews

Equipments > Substation > Booth > KTP-TW

**Substation KTP-TW 63-250/10(6)0,4**

ID 176016444

19 Customer reviews

Add Favorites | Compare | Share

Description | Analogs | Characteristics | Components | Reviews | FAQ | Price dynamic

Country: Russia | Type: Booth | 2-200-000P

- Multi-vendor order management
- Custom catalog segmentations
- Custom payment solutions
- Convenient search and filters
- Guest checkout option
- Login/Sign in via social networks

### Price dynamics for six months

### Average price

6 500\$

6 000-7 500\$

The screenshot displays the 'Modul' marketplace interface for Russia. The main navigation includes 'Project', 'Stock', 'Manufacturers', 'Substations', 'Equipments', 'Components', and 'Configurator'. The 'Equipments' section is active, showing a list of products with filters for 'Price: Low to High' and 'Payment type'. A product listing for 'KTP-TW 63-250/10(6)0,4' is highlighted, showing a price of 6 000\$ (20% discount from 7 500P) and a seller 'Urals Transformers Factory'. An 'Add to Cart' button is visible. A 'Go to checkout' button is also present. An order summary overlay is shown in the bottom left, indicating 2 items for a total of 10 000\$, with a 500P discount, resulting in a final summary of 9 500 000 \$.

Order Summary:

|                 |                     |
|-----------------|---------------------|
| Items (2)       | 10 000 \$           |
| Sale (2)        | - 500P              |
| <b>Summary:</b> | <b>9 500 000 \$</b> |

# Complex conditions. Easy management

Main goal of EPDE Marketplace is to simplify the complexities of B2B selling. You will have the flexibility to configure and manage buyer and vendor accounts with multiple permission levels. Buyers and sellers will love the convenience of a marketplace built specifically for B2B transactions on the field of Electric Power Distribution.

## Your goods

- All 300
- Asale 70
- Errors 5
- Ready for sale 25
- Removed 150
- Archive 50

**Modul I Seller** Seller account

Main Orders **Goods** Prices Reviews Messenger

### Your goods

- All 300
- Asale 70
- Errors 5
- Ready for sale 25
- Removed 150
- Archive 50

Search [ ] Add Import Teemplate Product list

Select a category [v]  
Transformer x Substation x

| ID      | Image | Name                              | Status | In Stock | Price      | Date of create |
|---------|-------|-----------------------------------|--------|----------|------------|----------------|
| 0653348 |       | Substation KTP-TW 63-250/10(6)0,4 | Asale  | 24       | 2 000 000P | 20.08.2020     |
| 0653348 |       | Substation KTP-TW 63-250/10(6)0,4 | Asale  | 0        | 2 000 000P | 20.08.2020     |

**Goods** Add Import

- All 300
- Asale 70
- Errors 5
- Ready for sale 25

**Enterprise card** Edit

Dealings 300 ★★★★★ 19 Reviews

# Broject Manager

Make your teams working lives simpler, more productive and more pleasant. Broject Manager is the easiest way for teams to track their work – and get results. Everybody knows the goals and works with the team to get there. Broject manager – it's your Bro!



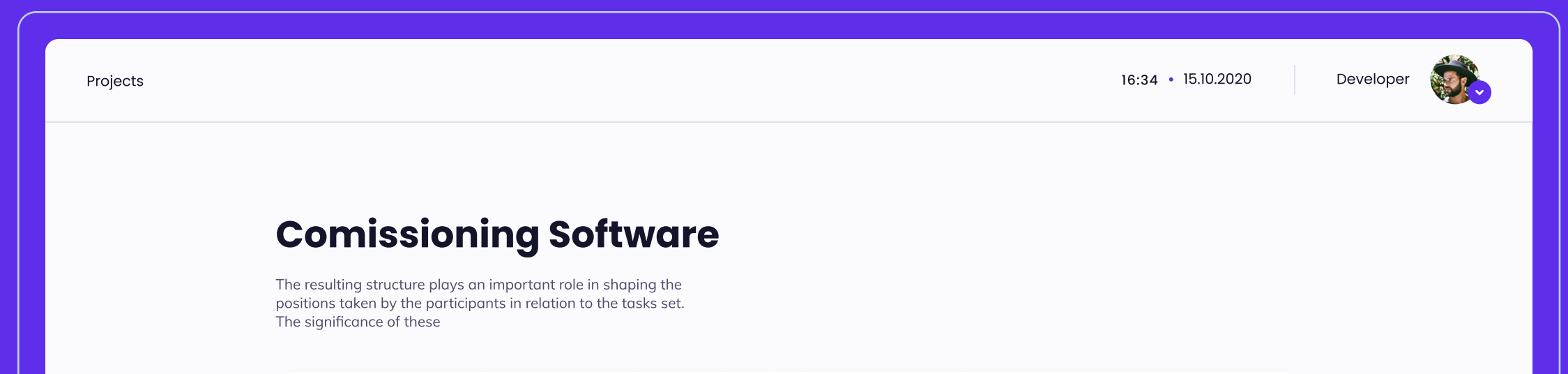
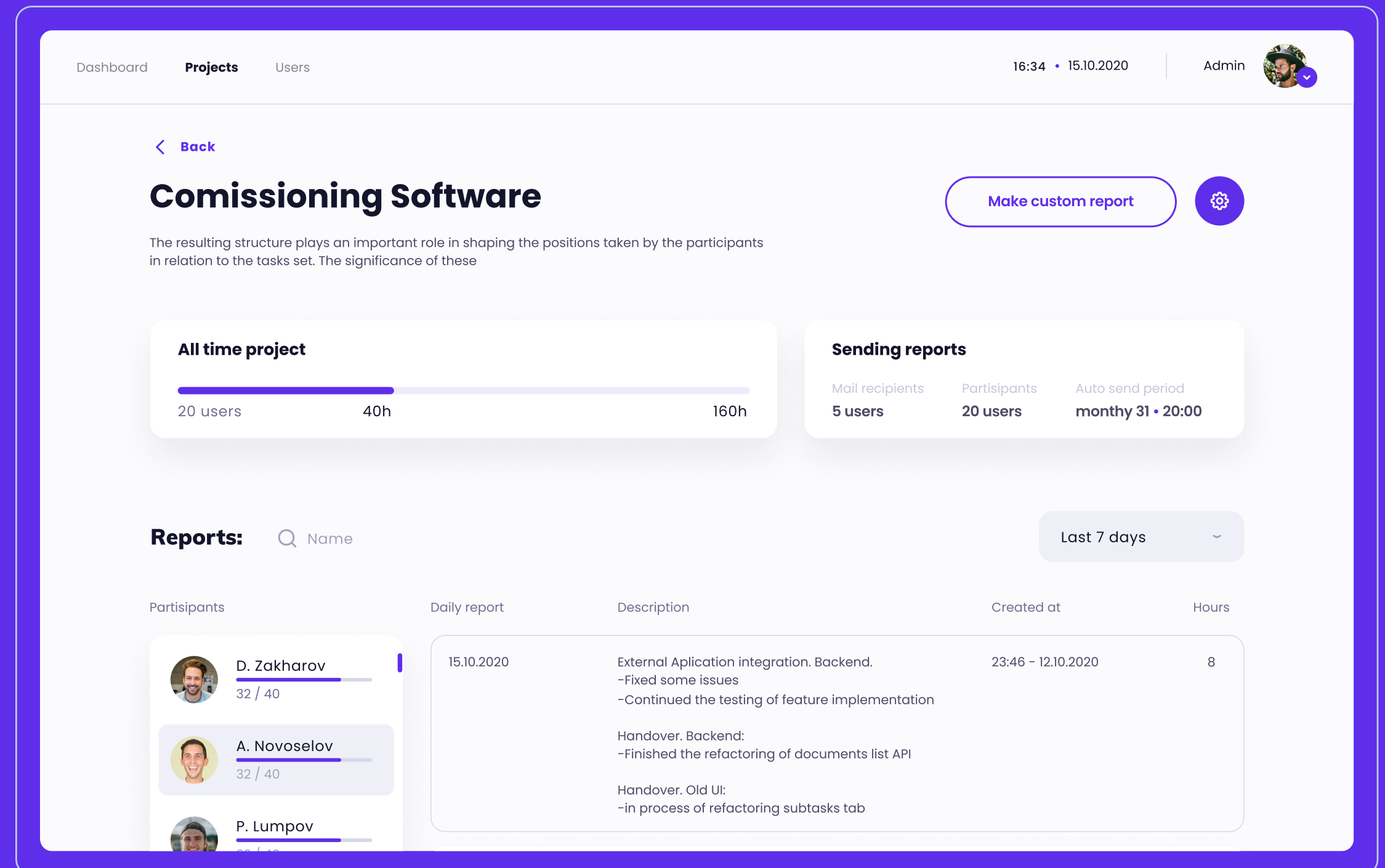
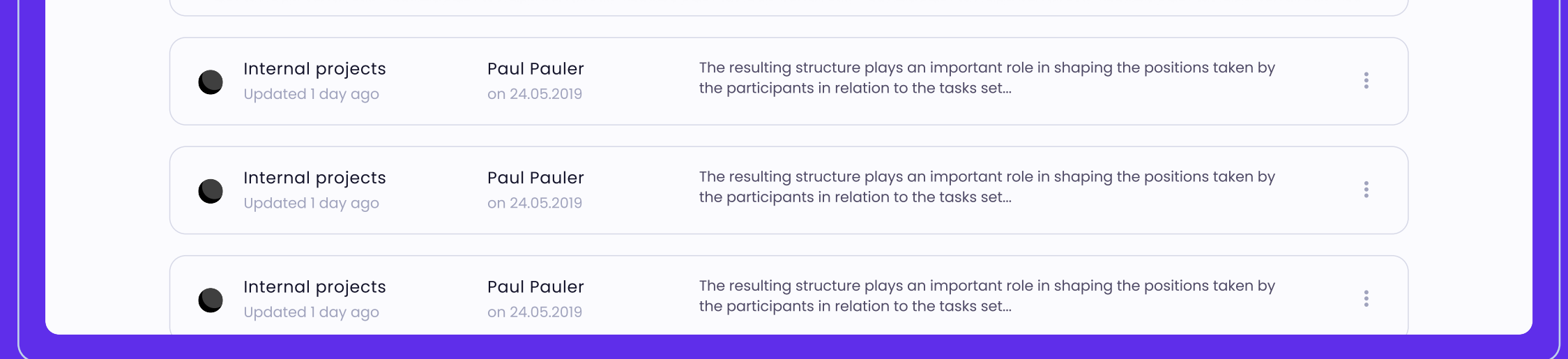


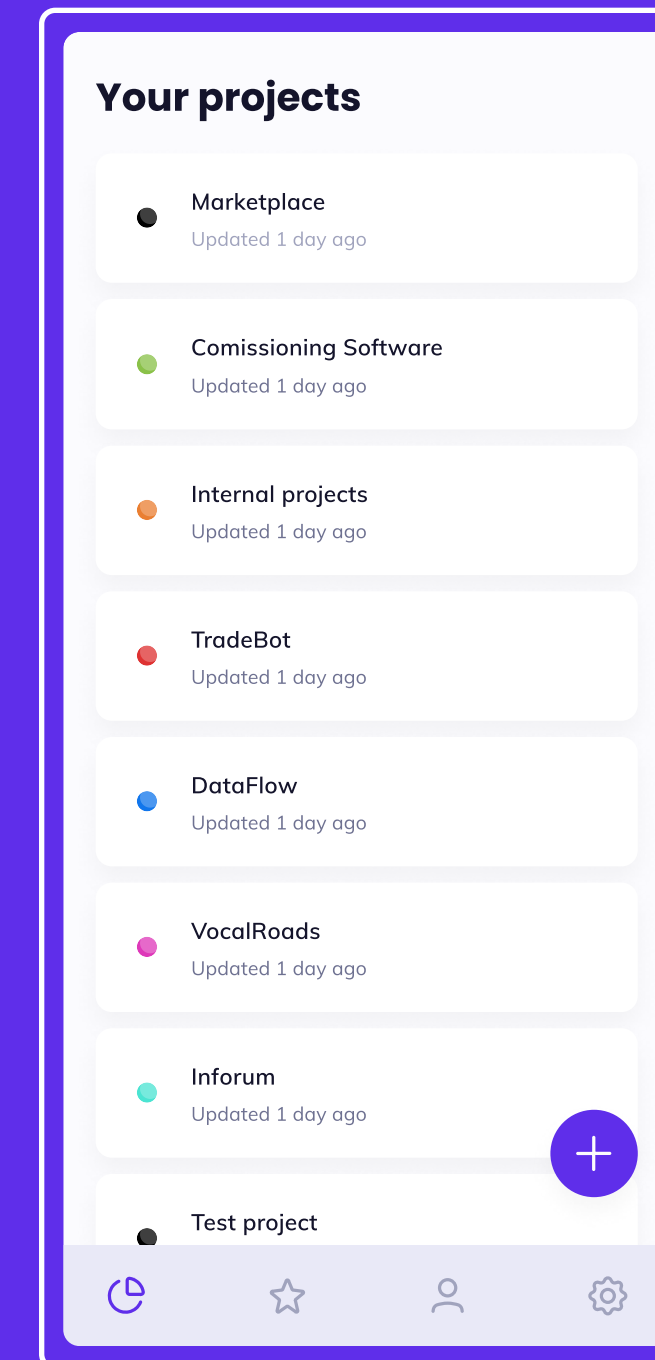
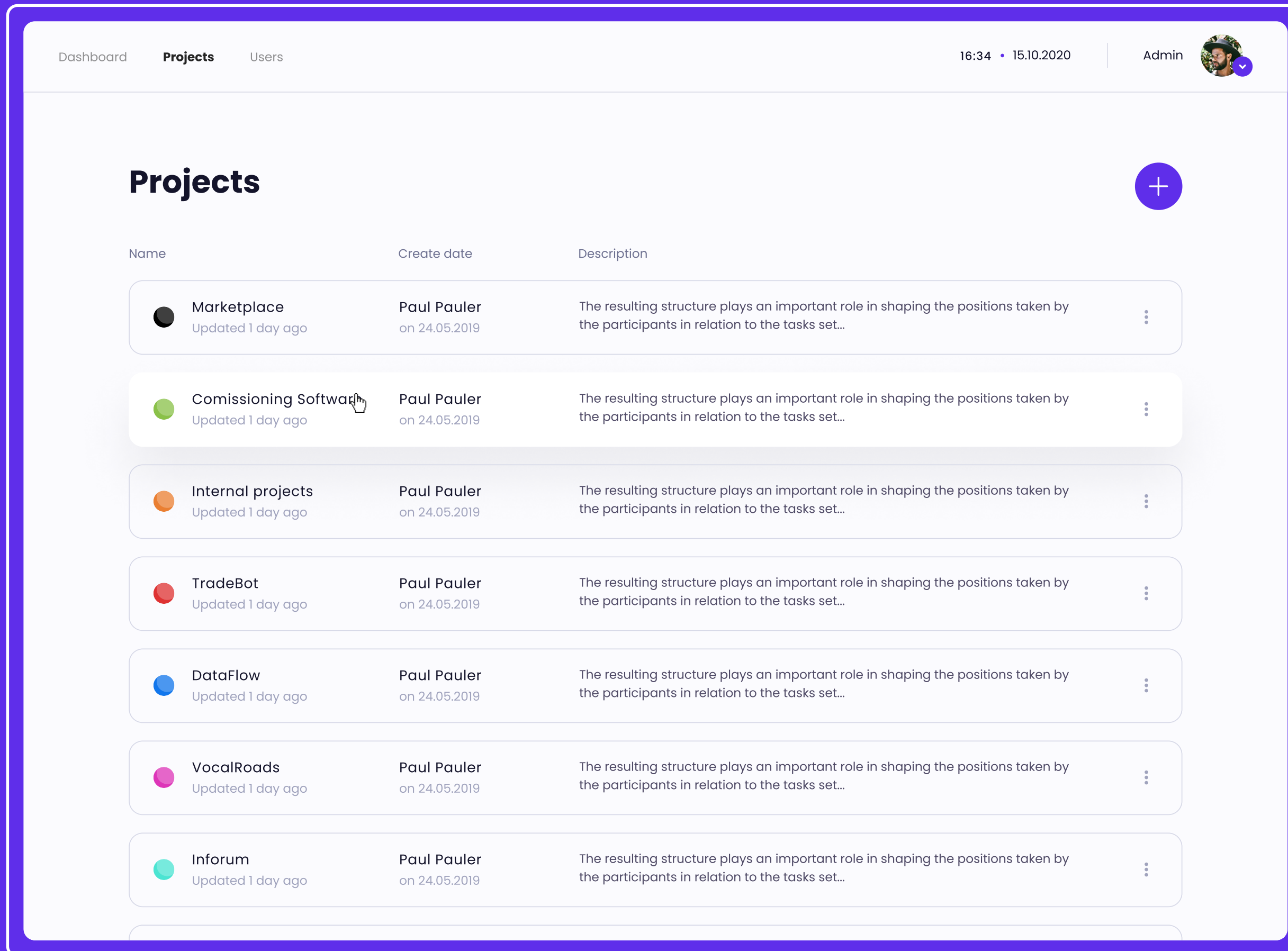
Complexity: ██████████

Timeline: 2017 – present days

- CI/CD
- Node.JS
- Nest.JS
- Angular 12
- Ionic/Cordova
- JIRA API Integration
- REST
- MariaDB
- Elastic Stack

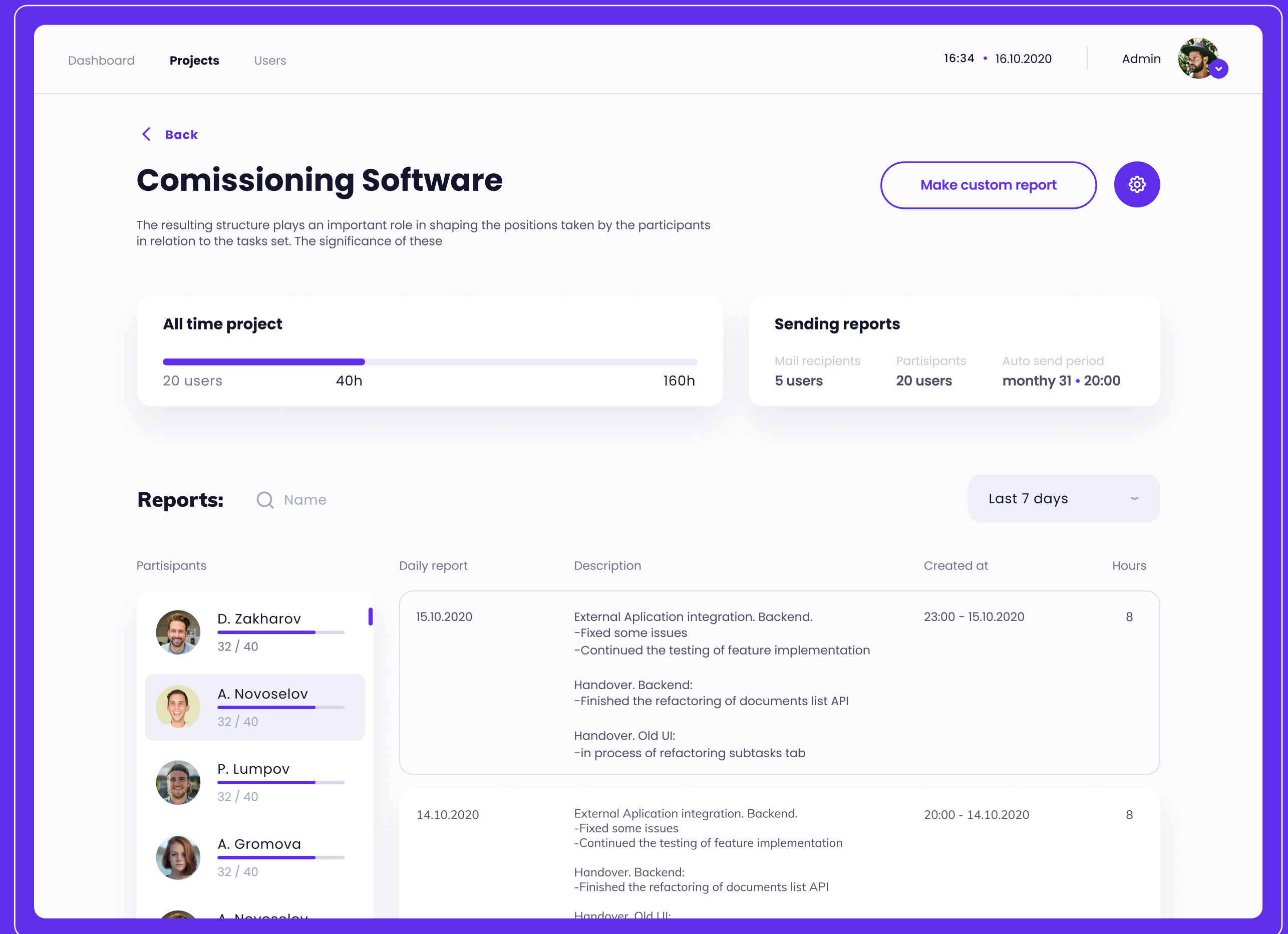
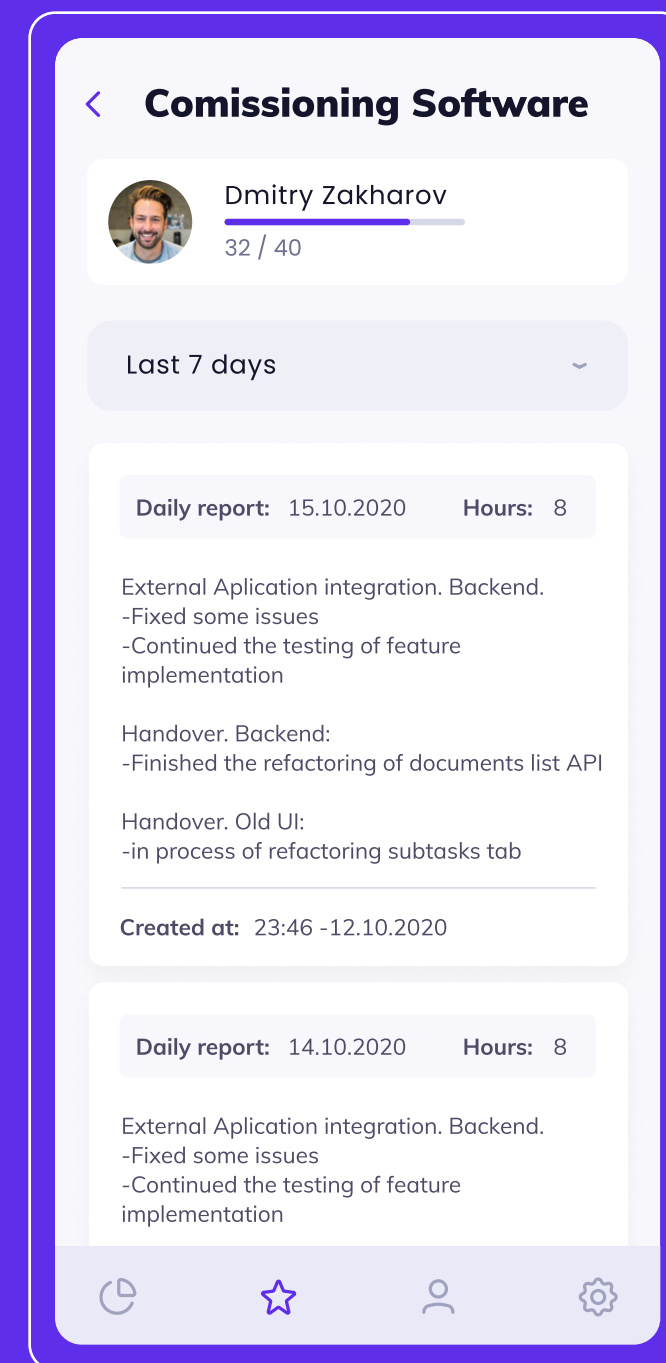
Project Manager – our domestic project with main goal to deal with daily routines and make the things easier: organize work during the day, post reports, schedule meetups and vacations.





Opposite to a comprehensive project management software, startups and small businesses need a simple project management solution with fewer features that cover basic functionality. Task management, team collaboration, document management, and email integrations are the common features in simple project management software.

Post daily reports, organize your own tasks and assign tasks to one of your teammates. With Project Manager you have all tasks and communication in one place.



Projects 16:34 • 15.10.2020 Developer

## Comissioning Software

The resulting structure plays an important role in shaping the positions taken by the participants in relation to the tasks set. The significance of these

Date of create: 21.10.2020 Time: 8 hours

External Aplication integration. Backend.  
-Fixed some issues  
-Continued the testing of feature implementation

Handover. Backend:  
-Finished the refactoring of documents list API

Handover. Old UI:  
-in process of refactoring subtasks tab

Send report

### Previous reports

Last 7 days

| Daily report | Description                                | Created at        | Hours |
|--------------|--|-------------------|-------|
| 15.10.2020   | External Aplication inteagracion. Backend. | 23:46 -12.10.2020 | 8     |



“I can easily check what happened the day before and get the clear picture of what is happening in the company. What’s more, Broject Manager helps me each day and keeps me regularly updated, in real time.”

**- Danila, Project Manager**

## Comissioning Software

The resulting structure plays an important role in shaping the positions taken by the participants in relation to the tasks set. The significance of these

Create new report

Daily report: 21.10.2020 Time: 8 hours

External Aplication integration. Backend.  
-Fixed some issues  
-Continued the testing of feature implementation

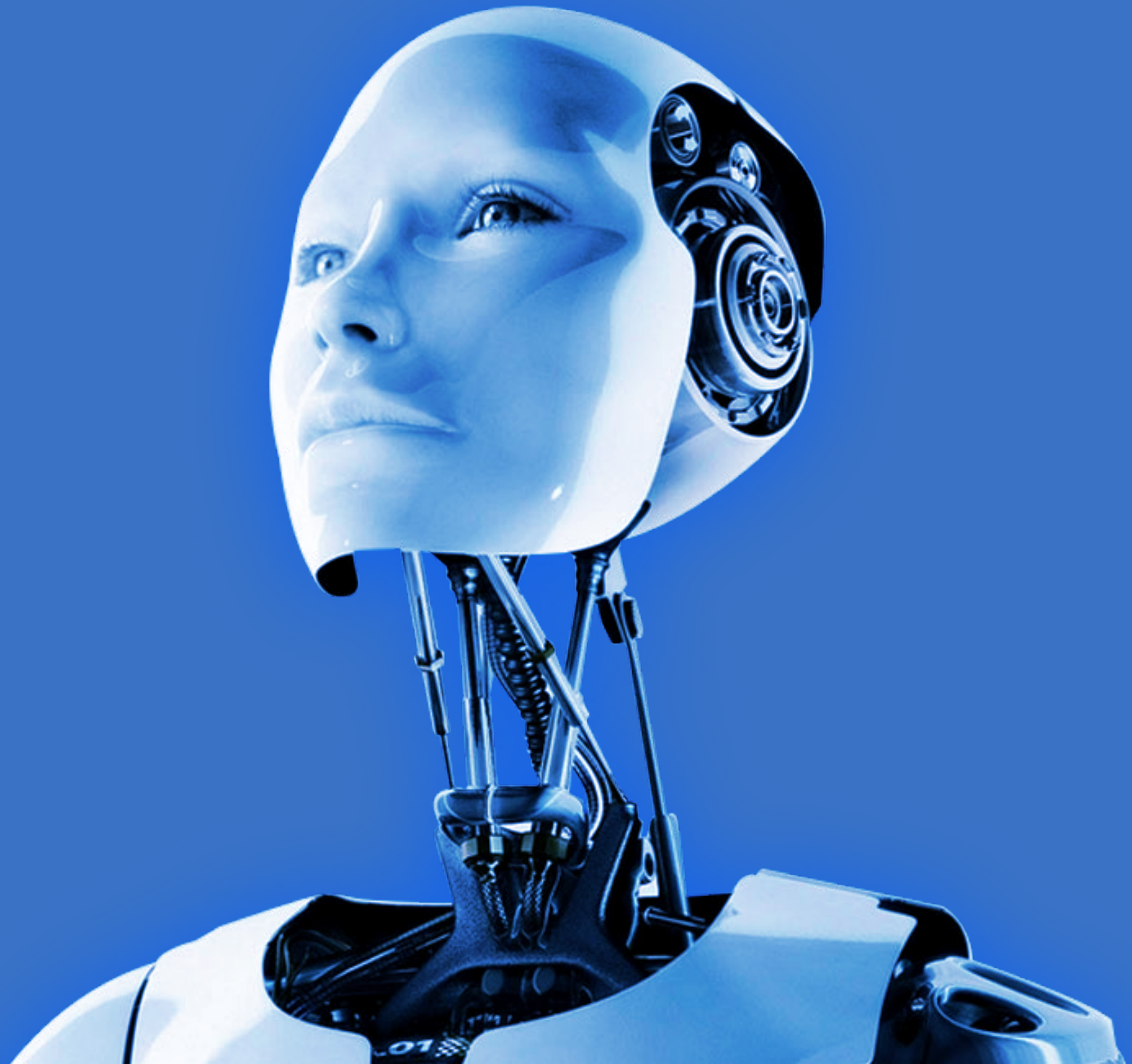
Handover. Backend:  
-Finished the refactoring of documents list API

Handover. Old UI:  
-in process of refactoring subtasks tab

Send report

# Blockchain Trading Bot

Create your strategy using UI and Rules  
Build your bot without a single line of code.  
Adjust and tweak it with the help of backtesting  
and practice trading. Deploy your bot on the  
market and watch your rules work their magic  
with 24/7 live-trading!



Our work • CryptoTrading Platform • Overview

Complexity:

Timeline: 2018 – Present days

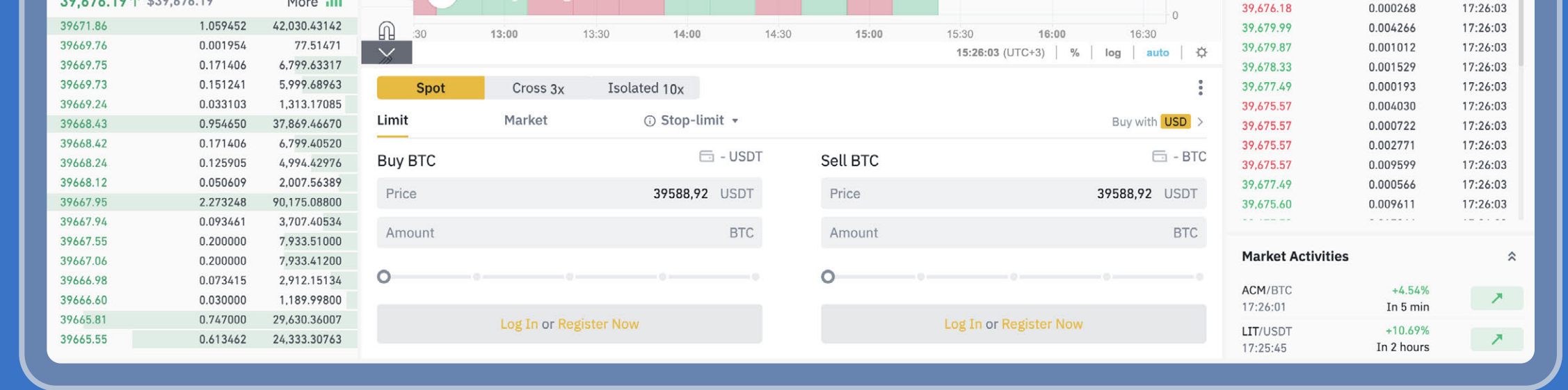
- CI/CD
- Node.js
- Angular
- Typescript/JS
- RxJS
- NestJS
- API Integrations
- REST
- PostgreSQL

### Custom Development Team with the following responsibilities:

- Business Analytics and Project Management
- UI/UX and Prototyping
- System Architecture, Feature Planning, Tech Writing
- API Integrations with various Crypto Stocks
- Continuous Integration/Continuous Delivery
- Quality Assurance
- Penetration Testing

sales@reverse.systems

<https://reverse.systems>



|             |                    |        |           |           |              |           |       |
|-------------|--------------------|--------|-----------|-----------|--------------|-----------|-------|
| ★ MATIC/BNB | 0.0058905 / \$2.22 | -5.31% | 0.0064151 | 0.0054315 | \$6,882.00M  | 67,118.63 | Trade |
| ★ DOT/BNB   | 0.06373 / \$24.00  | +1.45% | 0.06580   | 0.06155   | -            | 54,128.70 | Trade |
| ★ CAKE/BNB  | 0.04908 / \$18.48  | -4.12% | 0.05152   | 0.04866   | -            | 45,554.99 | Trade |
| ★ ADA/BNB   | 0.004637 / \$1.75  | -1.82% | 0.004819  | 0.004601  | \$55,909.54M | 42,434.07 | Trade |
| ★ XRP/BNB   | 0.002707 / \$1.02  | -0.81% | 0.002785  | 0.002652  | \$46,312.11M | 23,639.14 | Trade |
| ★ BAKE/BNB  | 0.011180 / \$4.21  | +1.91% | 0.011756  | 0.010383  | -            | 18,057.07 | Trade |

|                  |                   |                  |                 |                 |
|------------------|-------------------|------------------|-----------------|-----------------|
| BTC/BUSD -1.52%  | SHIB/BUSD -8.94%  | DOGE/BUSD -3.88% | DOT/BUSD -0.44% | VET/BUSD -3.68% |
| <b>39,584.20</b> | <b>0.00000906</b> | <b>0.34315</b>   | <b>23.815</b>   | <b>0.13183</b>  |
| \$39,544.42      | \$0.000009        | \$0.342807       | \$23.79         | \$0.131698      |

## Secure

Your funds lie safely on your exchange. Trality will never touch them directly and only use official exchange APIs.

## Cloud-based

Your algorithms run reliably 24/7 and never miss a trade. Trality eliminates the need to setup your own trading servers!

## Encrypted

Your trading strategies are end-to-end encrypted. We can't see your strategies as they are in-browser encrypted.

|             |                        |         |           |           |              |           |       |
|-------------|------------------------|---------|-----------|-----------|--------------|-----------|-------|
| ★ MATIC/BNB | 0.0058905 / \$2.22     | -5.31%  | 0.0064151 | 0.0054315 | \$6,882.00M  | 67,118.63 | Trade |
| ★ DOT/BNB   | 0.06373 / \$24.00      | +1.45%  | 0.06580   | 0.06155   | -            | 54,128.70 | Trade |
| ★ CAKE/BNB  | 0.04908 / \$18.48      | -4.12%  | 0.05152   | 0.04866   | -            | 45,554.99 | Trade |
| ★ ADA/BNB   | 0.004637 / \$1.75      | -1.82%  | 0.004819  | 0.004601  | \$55,909.54M | 42,434.07 | Trade |
| ★ XRP/BNB   | 0.002707 / \$1.02      | -0.81%  | 0.002785  | 0.002652  | \$46,312.11M | 23,639.14 | Trade |
| ★ BAKE/BNB  | 0.011180 / \$4.21      | +1.91%  | 0.011756  | 0.010383  | -            | 18,057.07 | Trade |
| ★ VET/BNB   | 0.0003515 / \$0.132350 | -2.06%  | 0.0003637 | 0.0003443 | \$7,339.43M  | -         | Trade |
| ★ MDX/BNB   | 0.005478 / \$2.06      | +4.78%  | 0.006313  | 0.005045  | -            | -         | Trade |
| ★ UNI/BNB   | 0.07711 / \$29.03      | +7.56%  | 0.07866   | 0.07022   | -            | -         | Trade |
| ★ MASK/BNB  | 0.02107 / \$7.93       | -5.94%  | 0.02800   | 0.02065   | -            | -         | Trade |
| ★           | 0.01890 / \$7.12       | -3.28%  | 0.02010   | 0.01759   | -            | -         | Trade |
| ★           | 0.0001496 / \$0.056329 | +20.26% | 0.0001657 | 0.0001156 | \$187.29M    | -         | Trade |
| ★           | 0.0006264 / \$0.235858 | +3.86%  | 0.0006380 | 0.0005743 | \$63.32M     | -         | Trade |

- BNB BNB
- BTC Bitcoin
- ETH Ethereum
- XRP XRP
- BCH Bitcoin Cash
- LTC Litecoin

**Order Book**

Price(USDT)    Amount(BTC)    Total

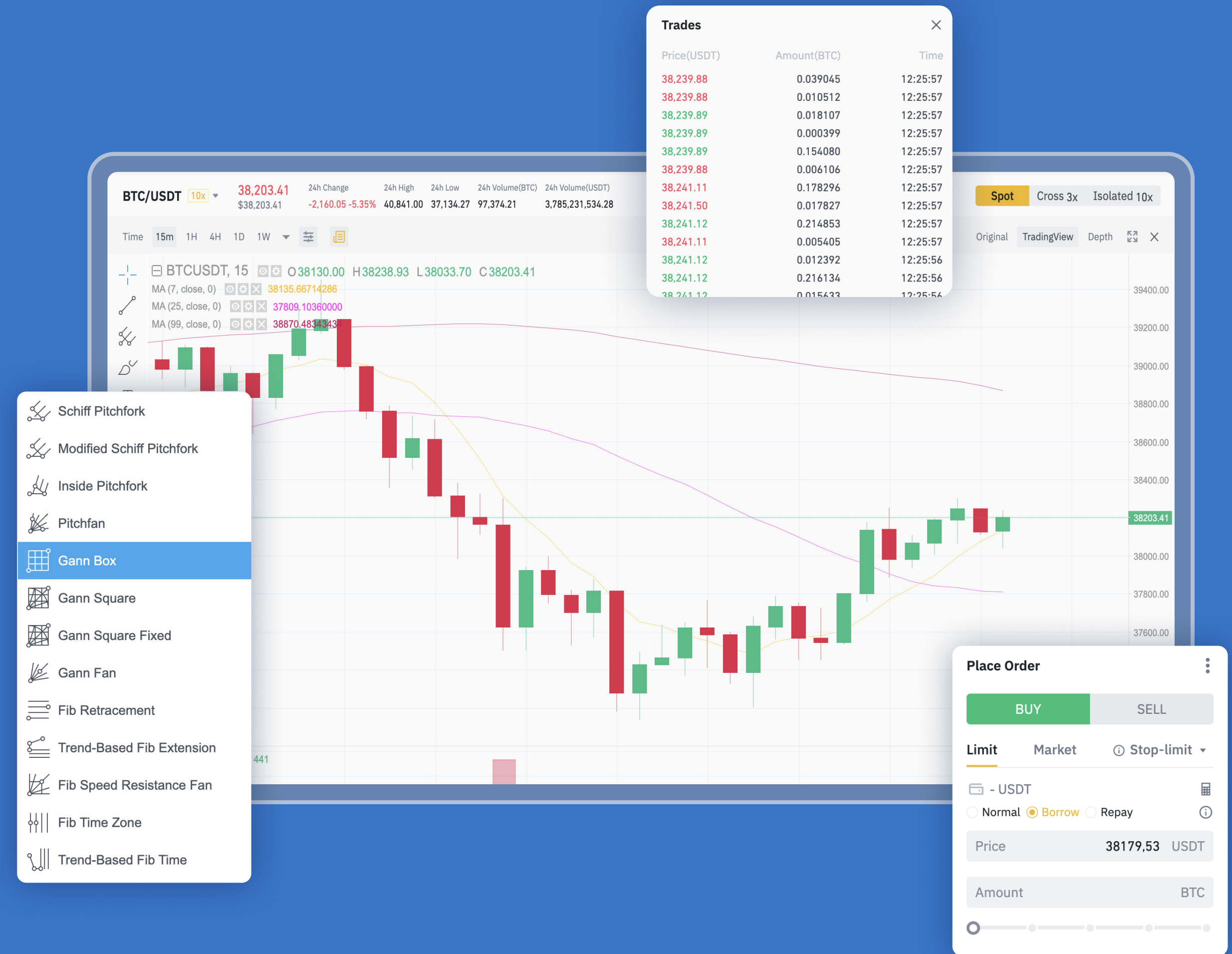
|          |          |             |
|----------|----------|-------------|
| 38260.19 | 0.000314 | 12.01370    |
| 38260.12 | 0.032093 | 1,227.88203 |
| 38260.00 | 0.034821 | 1,332.25146 |
| 38259.91 | 0.001160 | 44.38150    |
| 38259.76 | 0.000552 | 21.11939    |
| 38259.72 | 0.000800 | 30.60778    |
| 38257.78 | 0.004882 | 186.77448   |
| 38257.76 | 0.004847 | 185.43536   |
| 38255.95 | 0.001992 | 76.20585    |

**38,257.78** ↑ \$38,257.78    More

|          |          |              |
|----------|----------|--------------|
| 38255.94 | 0.290603 | 11,117.29093 |
| 38254.70 | 0.033544 | 1,283.21566  |
| 38254.09 | 0.441136 | 16,875.25625 |
| 38254.07 | 1.240390 | 47,449.96589 |
| 38252.92 | 0.000522 | 19.96802     |
| 38250.66 | 0.057548 | 2,201.24898  |
| 38250.65 | 0.100569 | 3,846.82962  |
| 38250.63 | 0.130505 | 4,991.89847  |
| 38250.25 | 0.004000 | 153.00100    |

# Flexible customization

Configure your market maker like never before. Cancel orders automatically with different configurations per market trend, set stop-losses on filled orders and revert orders automatically.





# Contacts

@ <https://reverse.systems>

☎ +7 (922) 22 81 81 8

✉ [sales@reverse.systems](mailto:sales@reverse.systems)

Contact us to learn how we can help with your software application development project today. Let's meet together!

